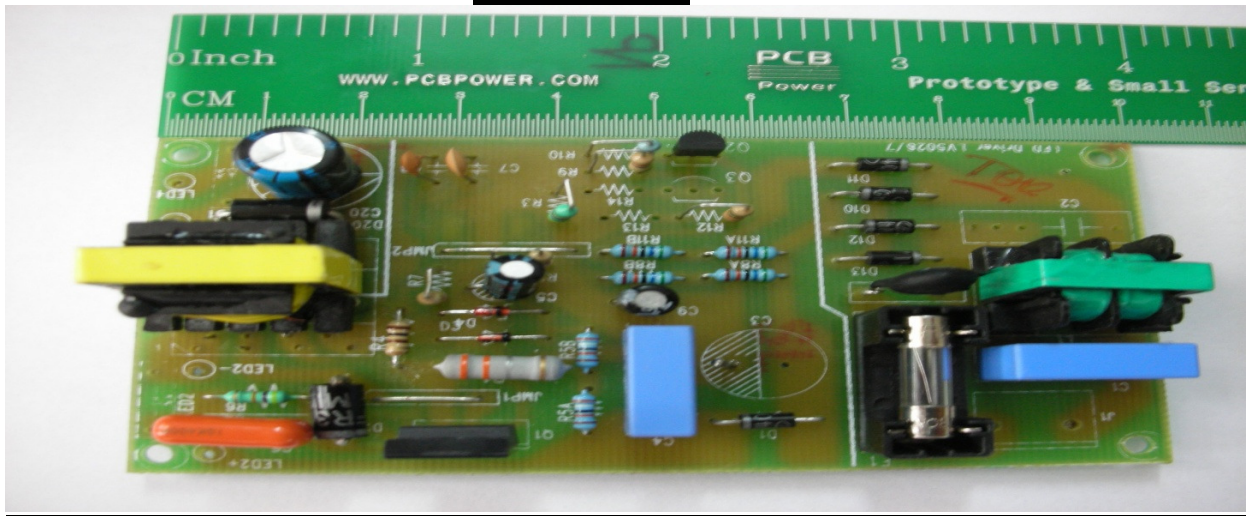
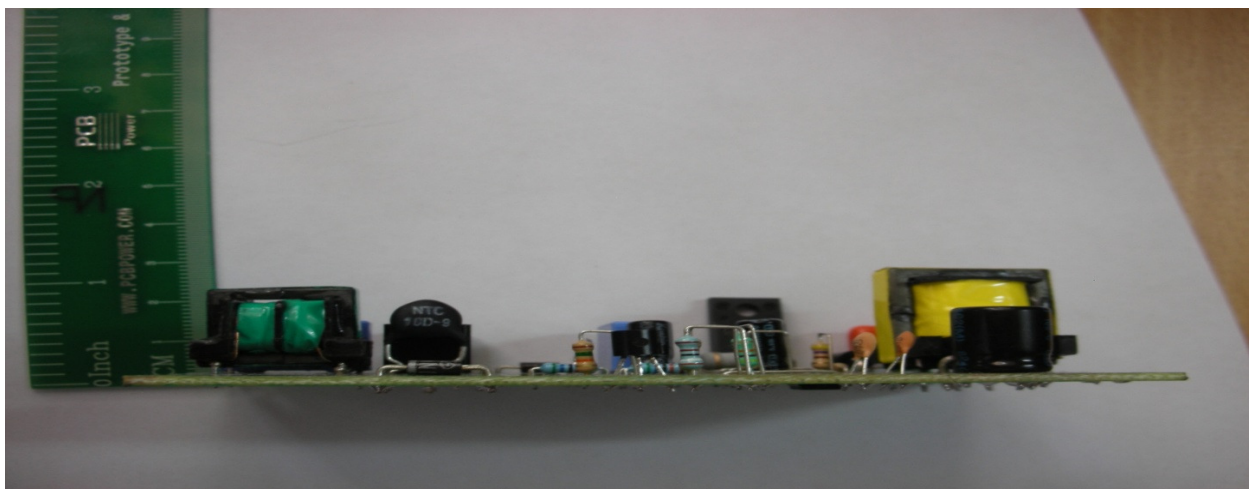


# SM LV5206 22 WATT LED LANTERN BOARD (V1.0)

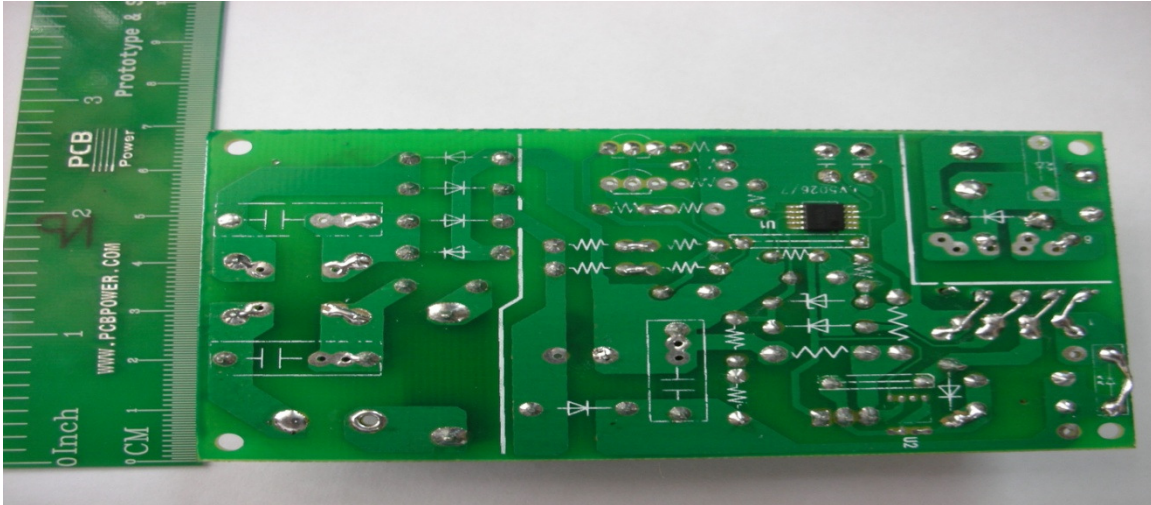
## TOP VIEW



## SIDE VIEW



**BOTTOM VIEW**



**REVISION HISTORY**

Name	Date	Reason for changes	Version
SANYO LV5206 18 WATT LED BOARD	27/8/2011	First version released	1.0

**INTRODUCTION**

LV5206M is a High Voltage LED driver controller which drives LED current up to 3A external MOSFET. LV5206M is realized very simple LED circuit with a few external parts. It corresponds to various wide dimming controls including the TRIAC dimming control.

**❖ FEATURES**

- High voltage LED controller
- Various Dimming Control-TRIAC & Analog & PWM input
- Soft Start function

- Built in TRIAC stabilized function
- Over voltage function
- Selectable frequency 50kHz & 70kHz
- Short circuit protection

### ❖ SPECIFICATIONS

Parameter	Symbol	Rating	Conditions	Unit
Maximum Input voltage	VIN max	-0.3 to 42		V
CS pin		-0.3 to 7		V
OUT pin	VOUT_abs	-0.3 to 42		V
Allowable power dissipation	Pd max	1.0	With specified board*	W
Junction temperature	Tjmax	150		°C
Operating temperature	Topr	30 to +125		°C
Storage temperature	Tstg	40 to +150		°C

### ❖ POWER SUPPLY SECTION

- Input Voltage: 85-138VAC/187-264
- Output power: depending on: External MOSFET rating

### ❖ APPLICATION

- General LED based indoor and outdoor lighting
- LED lanterns, Emergency lights
- White LED backlight for LCD panels
- Camping lights & Flashlights, LED lighting modules, LED Street light modules